

# HOUSE

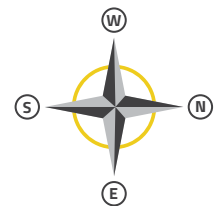
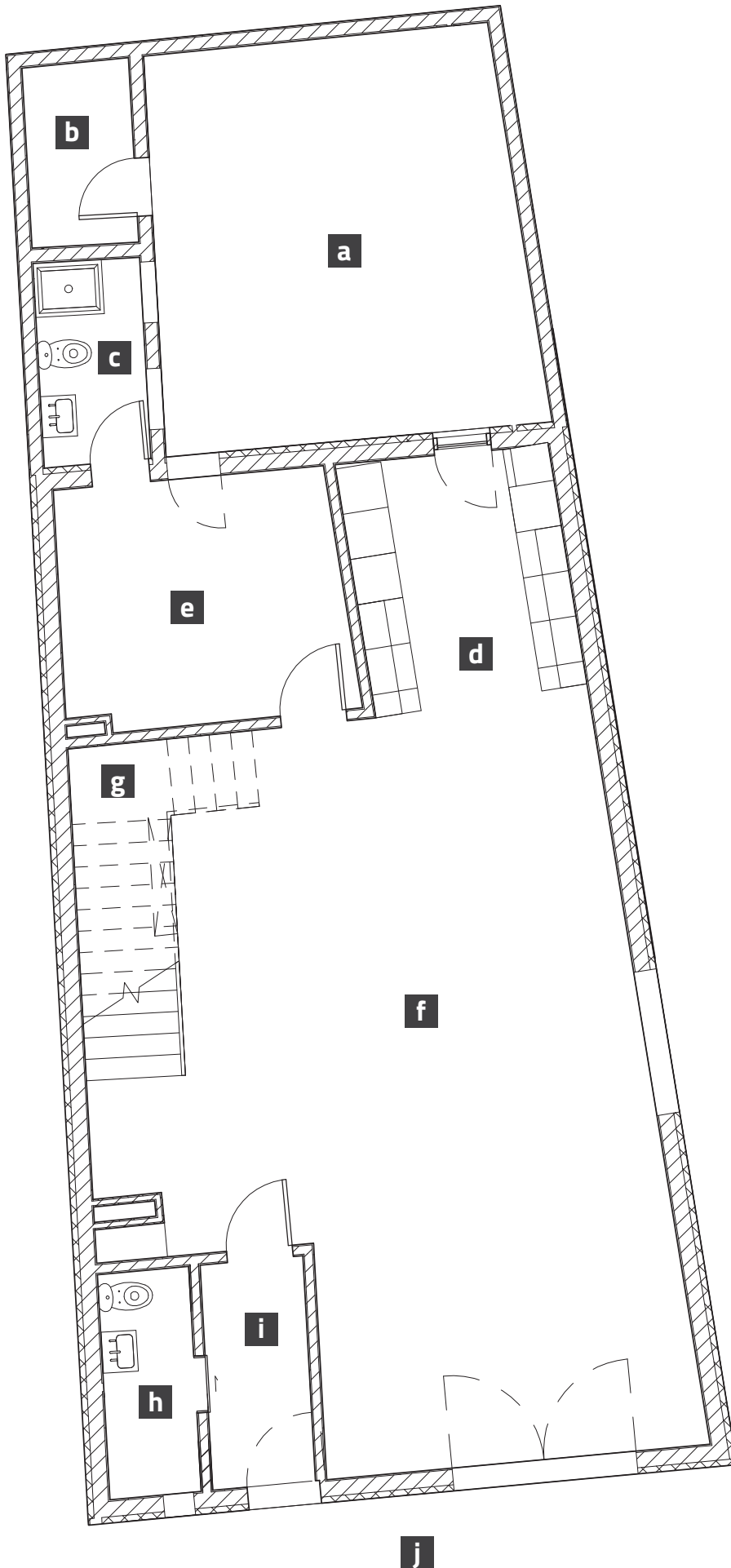
## LIVING

### FLOOR 0

 BUILDING GROSS AREA: 324m<sup>2</sup>

#### UTILIZED MAIN AREAS

<b>a</b>	patio	25m <sup>2</sup>
<b>b</b>	storage	3,3m <sup>2</sup>
<b>c</b>	bathroom 1	3,7m <sup>2</sup>
<b>d</b>	kitchen	9m <sup>2</sup>
<b>e</b>	bedroom suite	11,8m <sup>2</sup>
<b>f</b>	living room	57,6m <sup>2</sup>
<b>g</b>	stairs	/
<b>h</b>	bathroom 2	3,5m <sup>2</sup>
<b>i</b>	hall	3,9m <sup>2</sup>
<b>j</b>	garden	206m <sup>2</sup>



SUN ORIENTATION

A HOUSE WITH SPACE  
TO BE AN INDIVIDUAL



IMOV  
REAL ESTATE

VITOR GOMES | +351 224 023 965  
vitor.gomes@imov.site

PROMOTER

 SHALU INVESTMENTS  
URBAN LIVING

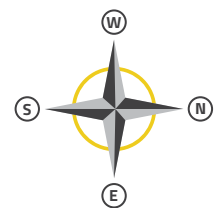
# HOUSE LIVING

## FLOOR 1

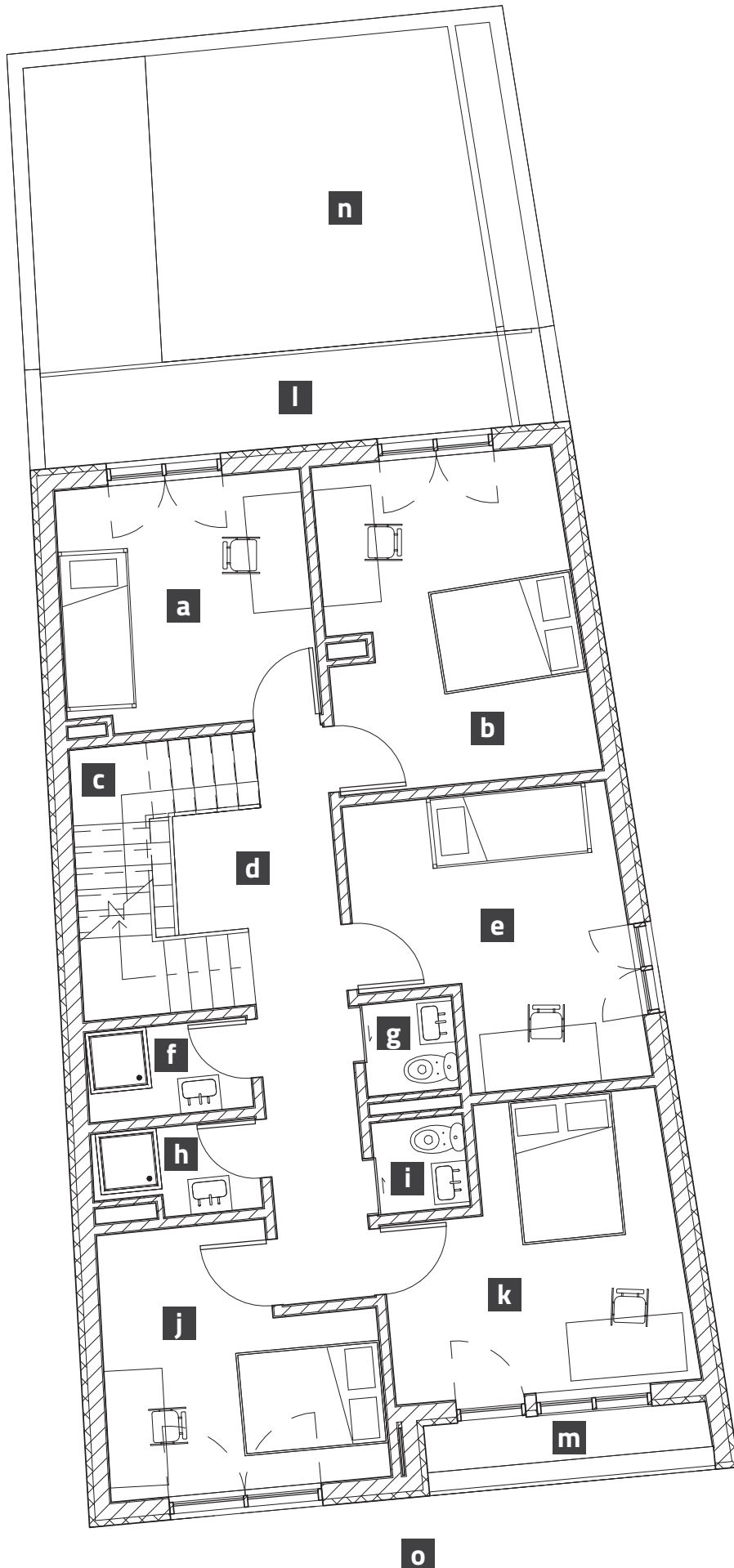
 BUILDING GROSS AREA: 324m<sup>2</sup>

### UTILIZED MAIN AREAS

a	bedroom 1	10,6m <sup>2</sup>
b	bedroom 2	13,9m <sup>2</sup>
c	stairs	/
d	corredor	10m <sup>2</sup>
e	bedroom 3	12m <sup>2</sup>
f	bathroom 1	2,5m <sup>2</sup>
g	bathroom 2	1,3m <sup>2</sup>
h	bathroom 3	2,2m <sup>2</sup>
i	bathroom 4	1,3m <sup>2</sup>
j	bedroom 4	10,9m <sup>2</sup>
k	bedroom 5	13m <sup>2</sup>
l	balcony 1	7,15m <sup>2</sup>
m	balcony 2	3,3m <sup>2</sup>
n	patio	25m <sup>2</sup>
o	garden	206m <sup>2</sup>



SUN ORIENTATION



A HOUSE WITH SPACE  
TO BE AN INDIVIDUAL



IMOV REAL ESTATE VITOR GOMES | +351 224 023 965  
vitor.gomes@imov.site

PROMOTER

 SHALU INVESTMENTS  
URBAN LIVING

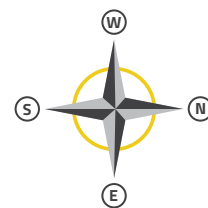
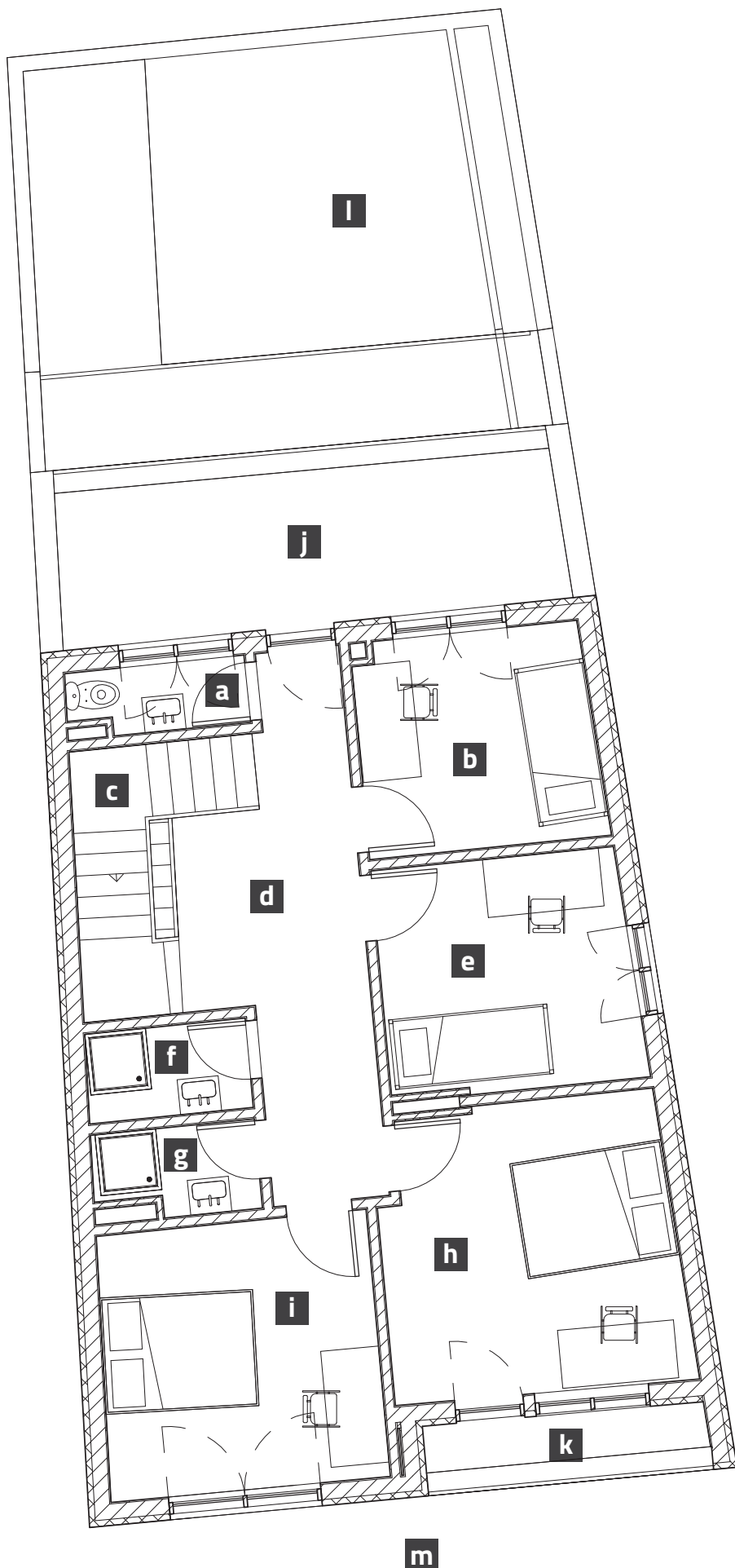
# HOUSE LIVING

## FLOOR 2

 BUILDING GROSS AREA: 324m<sup>2</sup>

### UTILIZED MAIN AREAS

a	bathroom 1	1,9m <sup>2</sup>
b	bedroom 1	11,84m <sup>2</sup>
c	stairs	/
d	corredor	12,35m <sup>2</sup>
e	bedroom 2	9,95m <sup>2</sup>
f	bathroom 2	2,5m <sup>2</sup>
g	bathroom 3	2,2m <sup>2</sup>
h	bedroom 3	14,3m <sup>2</sup>
i	bedroom 4	12,6m <sup>2</sup>
j	balcony 1	15m <sup>2</sup>
k	balcony 2	3,3m <sup>2</sup>
l	patio	25m <sup>2</sup>
m	garden	206m <sup>2</sup>



SUN ORIENTATION

A HOUSE WITH SPACE  
TO BE AN INDIVIDUAL



IMOV  
REAL ESTATE

VITOR GOMES | +351 224 023 965  
vitor.gomes@imov.site

PROMOTER

 SHALU INVESTMENTS  
URBAN LIVING